



# INSTRUCTION BULLETIN

No. 340313  
Machine: ATLV 4300  
Published: 12-99/01  
System: SWEEPING

**NOTE: DO NOT DISCARD the Parts List from the Instruction Bulletin. Place the Parts List in the appropriate place in your machine manual for future reference. Retaining the Parts List will make it easier to reorder individual parts and will save you the cost of ordering an entire kit.**

*NOTE: Numbers in parenthesis ( ) are reference numbers for parts listed in Bill of Materials.*

Installation instructions for kit number 368218

## **SYNOPSIS / PROBLEM:**

This kit contains the parts needed to install an 8" gate valve on the model ATLV 4300.  
Please follow step-by-step instructions.

## **SPECIAL TOOLS / CONSIDERATIONS: NONE**

(Estimated time to complete: 1 hours)

## **PREPARATION:**

(Refer to FIG. 1 thru 4)

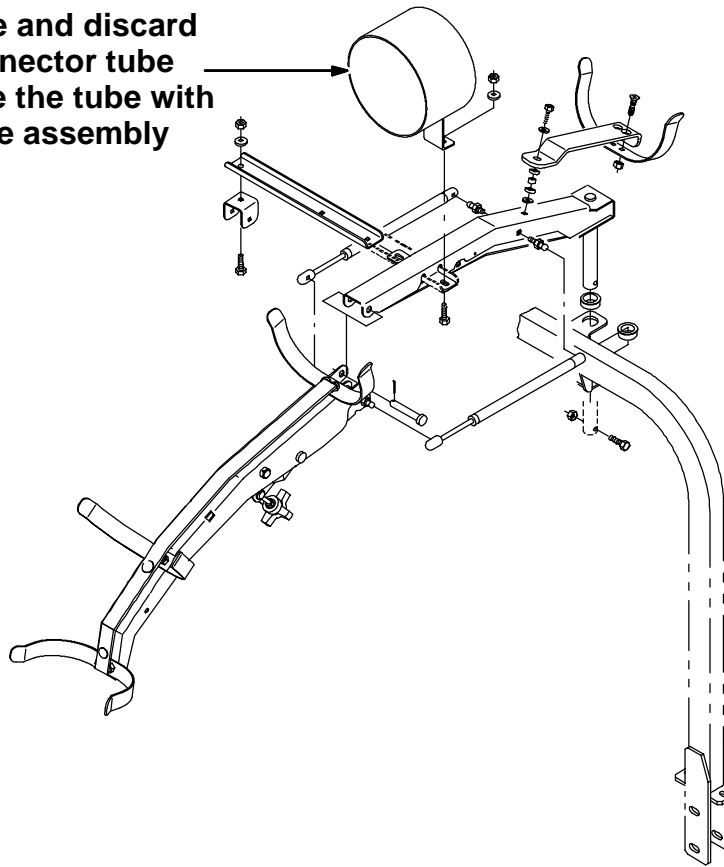
**FOR SAFETY: Before leaving or servicing machine, stop on level surface and set parking brake. Then turn off machine and remove key.**

## **INSTALLATION:**

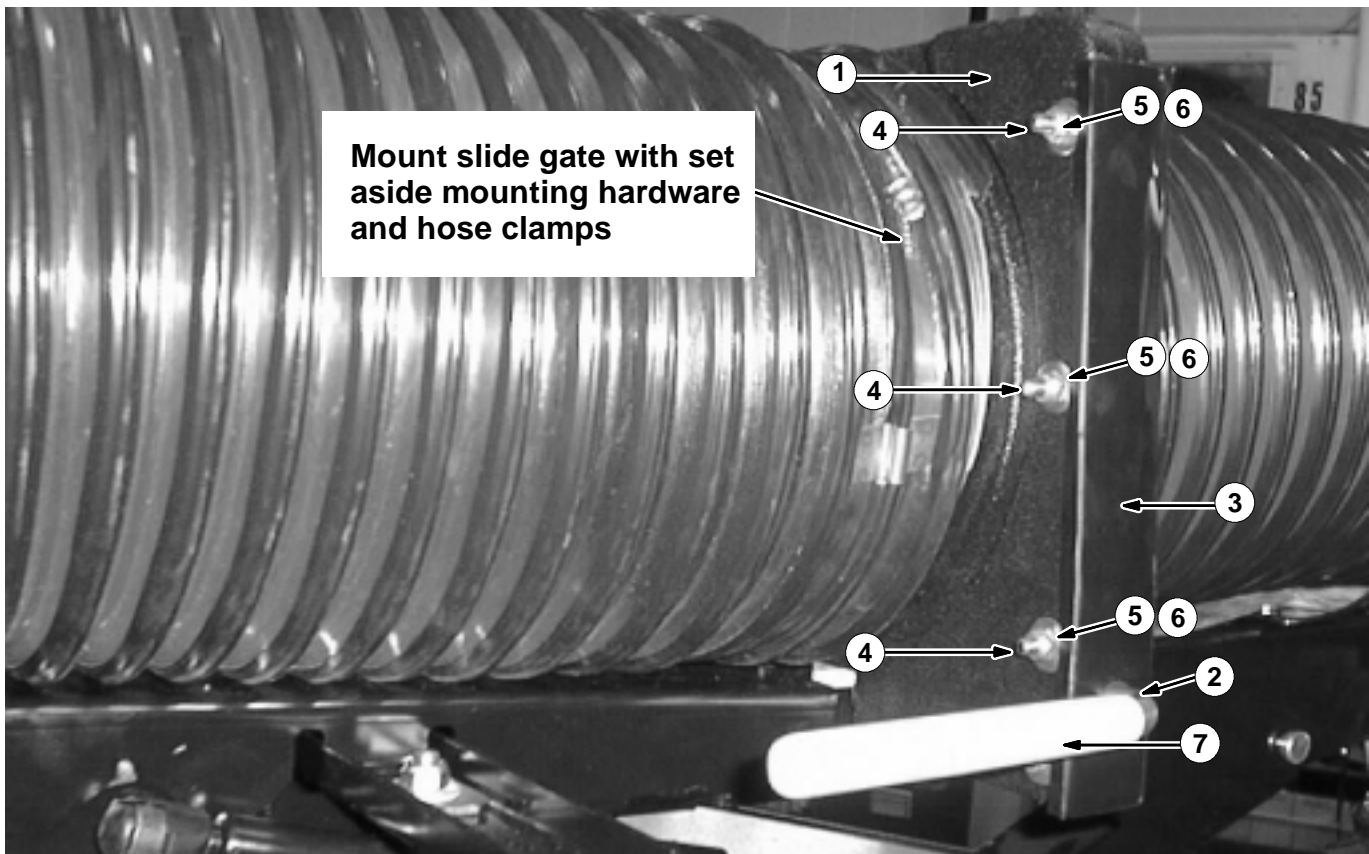
(Refer to FIG. 1 thru 4)

1. Assemble the gate valve. Refer to the bill of material for parts.
2. Remove and discard the connector tube (367703). Set the two hose clamps (367713) and mounting hardware aside. (Refer to FIG. 1)
3. Mount the slide gate assembly in place of the tube weldment using existing mounting hardware. Check that the slide gate handle faces the right hand outside of the machine. (Refer to FIG. 1, 2 and 3)
4. Connect the two 8" hoses using the existing set aside hose clamps. (Refer to FIG. 2)
5. Start the machine. Turn the vacuum fan on.
6. Check the gate valve for proper operation. Adjust the air flow by sliding the gate in and out.

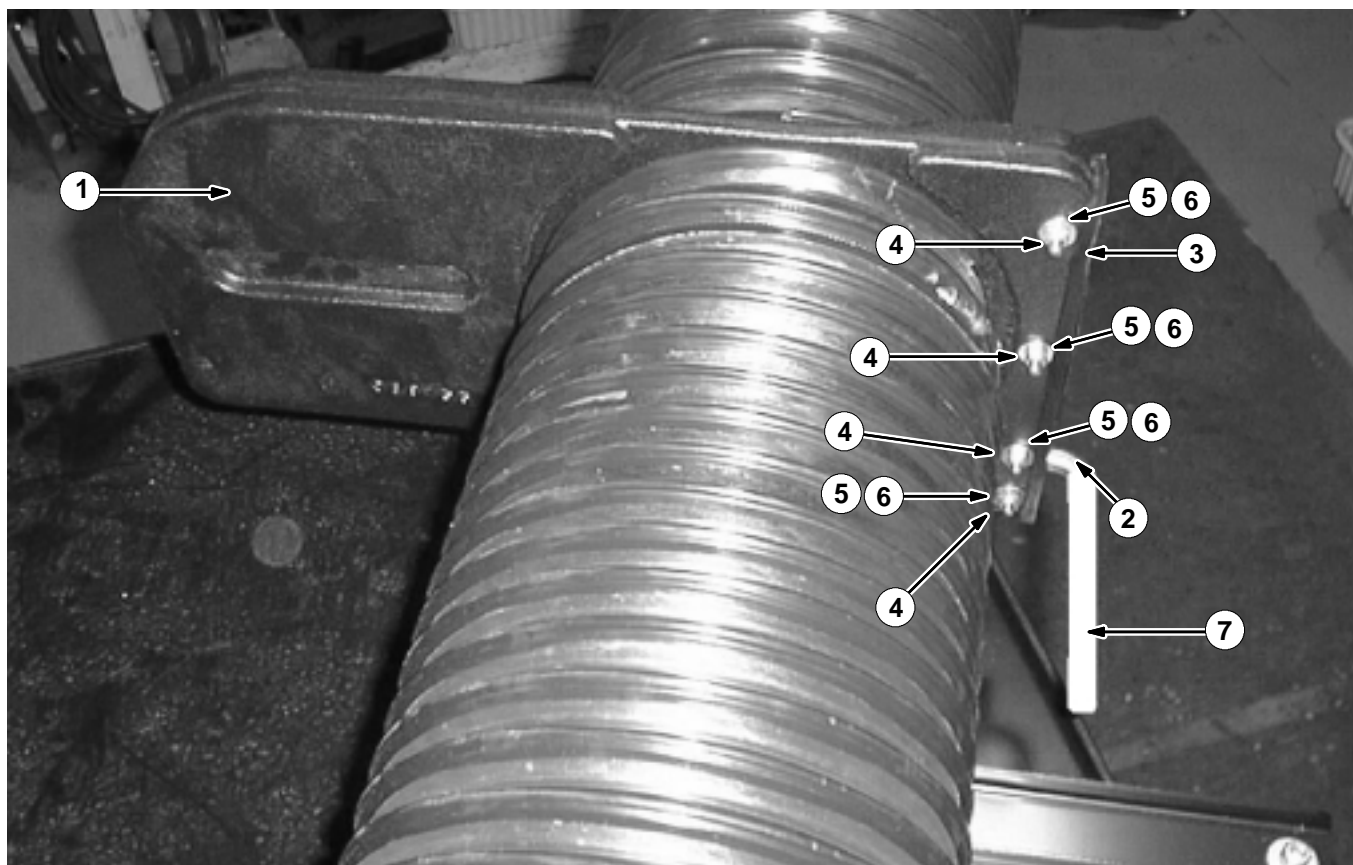
Remove and discard  
the connector tube  
Replace the tube with  
the slide assembly



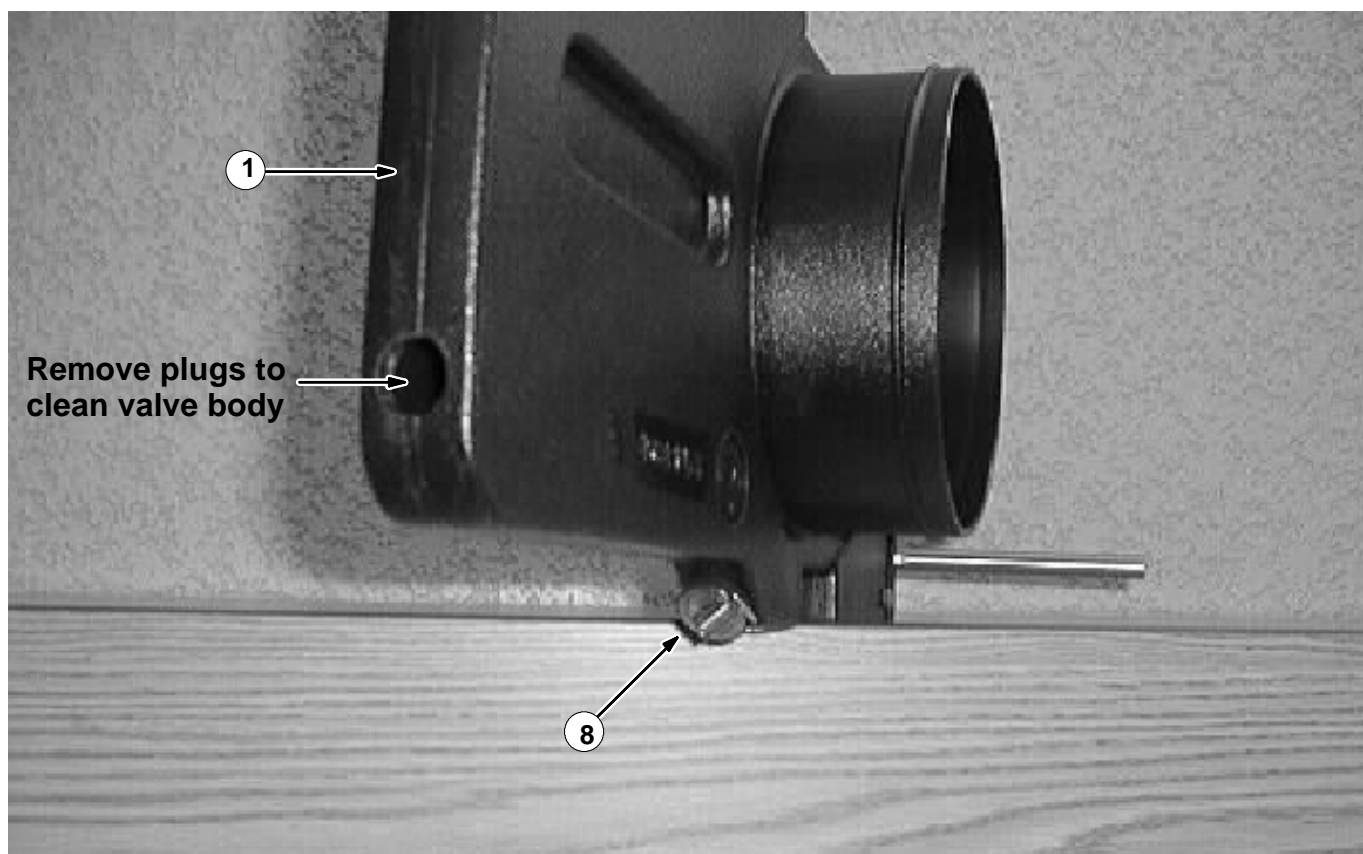
**FIG. 1 - CONNECTOR TUBE REMOVAL**



**FIG. 2 - 8" GATE VALVE INSTALLATION (SIDE)**



**FIG. 3 - 8" GATE VALVE INSTALLATION (TOP)**



**FIG. 4 - EXPANDABLE PLUG LOCATIONS**

# **BILL OF MATERIALS FOR 8" GATE VALVE KIT**

<b>Ref.</b>	<b>TENNANT Part No.</b>	<b>Description</b>	<b>Qty.</b>
1	368155	Valve, body	1
2	368196	Plate wldt, valve	1
3	368208	Seal, valve, 8.0"	1
4	06947	Screw, hex, M6 X 1.0	4
5	08708	Nut, hex, lock	4
6	01684	washer, flat	8
7	382291	Grip, vinyl	1
8	01495	Plug, expandable	2

TENNANT COMPANY  
P. O. Box 1452  
Minneapolis, MN 55440-1452